

PowerCon 4.0 Network Management Software for Digital Video Recorders and Network Cameras



System requirements

Processor: PC Pentium IV (1.6 or higher) / AMD Athlon (1.8 or higher)

Operating system: Windows XP, service pack 1 or higher

VGA card: 32 MB min., 16,7 million colours, with DirectX 9.0C support

USB: 2.0 interface

Memory: 256 MB RAM

30 MB free HD space for installation

Min. 10 MB free HD space for storage

Mediaplayer: Microsoft mediaplayer version 8.x or higher

Further: DirectX 9.0C

Supported DVRs: EDR 400 / 1600*

EDSR 100*

EDSR 400 H / 400 M*

EDSR 600 / 900 / 1600*

EDR 410 H / 410 M / 810 H / 810 M

EDR 910 / 920 / 1610 / 1640

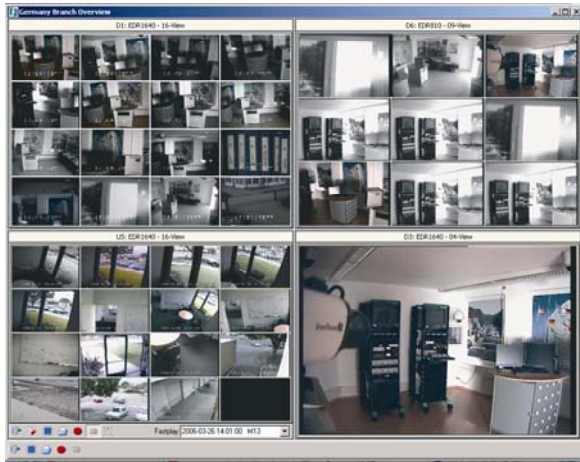
*latest DVR firmware version

Supported network cameras: EAN 600

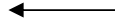
Versions: PowerCon 4.0: single client version with USB key
PowerCon 4.0 update: update version for PowerCon Pro and PowerCon Station (serial number of existing version required)

Features

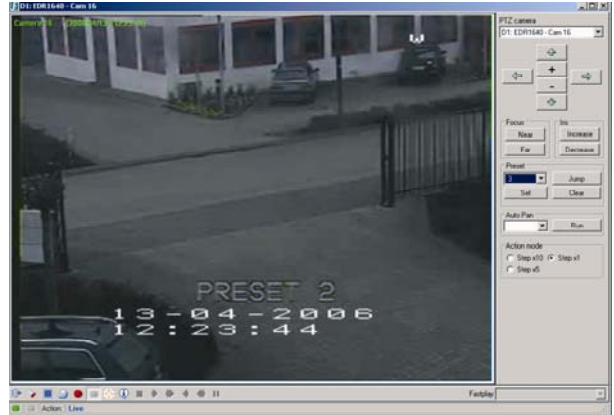
- ✓ Unlimited number of managed systems (DVRs, network cameras)
- ✓ Live and playback view
- ✓ Local storage and printout of video data or single pictures on client PC
- ✓ Multi-window design with scalable video windows
- ✓ Free definable multiviews with up to 4 DVR systems or network cameras, also mixed display of different DVRs (max. 64 cameras in 1 multiview with 4 x 16-channel DVR)
- ✓ Mapview: visualisation of CCTV system in areas or buildings with freely scalable maps / graphics (BMP or JPG format)
- ✓ Remote DVR configuration (EDR DVR series only)
- ✓ Network alarm reception and management
- ✓ Multi-monitor support (depending on PC configuration)
- ✓ Advanced access rights management with individual user rights for functions and system access
- ✓ Network monitor for visualisation of network traffic
- ✓ System checker: integrated background port checker with alarm function for availability of DVRs and cameras in network
- ✓ Support of external program starts



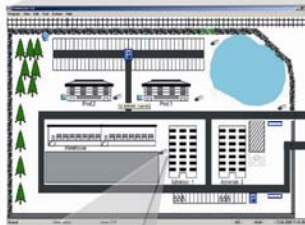
Multiview function enables display of up to 64 cameras from up to 4 different DVRs



PTZ functionality for speed dome and further PTZ cameras during remote viewing



Mapview function: integration of freely scalable maps / graphics (BMP or JPG format) to visualise locations and areas



Multi-window design:
Graphic surface remains visible while the video images are displayed on additional